



PSG College of Pharmacy
Coimbatore

Admitted year: 2019

Batch: 2019 – 2023

CO ATTAINMENT
by Direct Method
B PHARM

S.No	Course Code	Semester	Course	CO1	CO2	CO3	CO4	CO5	Sign
1.	BP801T	8	Biostatistics and Research Methodology	79.70	79.22	79.32	79.32	79.32	
2.	BP801T	8	Social and Preventive Pharmacy	77.01	77.01	77.01	77.01	77.01	
3.		8	ECA	90.32	90.32	90.32	90.32	90.32	
4.		8	ECB	92.74	92.74	92.74	92.74	92.74	
5.		8	Project Work	100	100	100	100	100	

fy



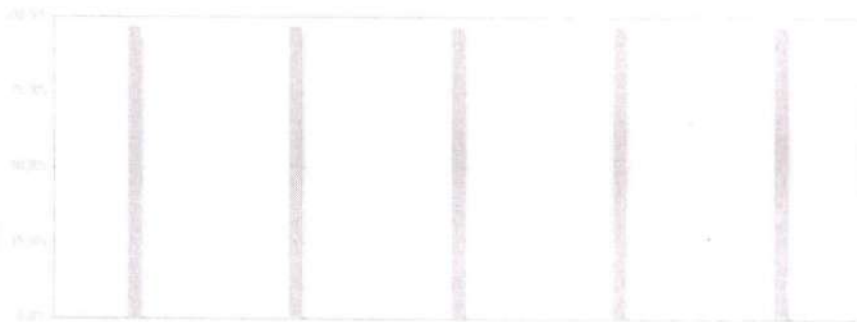


PSG SONS & CHARITY TRUST
PSG College of Pharmacy, Coimbatore.
Department of Pharmacy

Curriculum: BPharm in Pharm 2022-2026

Term: 1 - Semester

Course: Human Anatomy and Physiology Practical I-BP107P



Direct Attainment / Targets Levels

Sl No.	Attainment Level Name	Attainment Level Value	CIA Target %	TEE Target %
1	Zero	0	0% students scoring \geq 60% marks out of relevant maximum marks.	0% students scoring \geq 60% marks out of relevant maximum marks.
2	Low	1	50% students scoring \geq 60% marks out of relevant maximum marks.	50% students scoring \geq 60% marks out of relevant maximum marks.
3	Medium	2	60% students scoring \geq 60% marks out of relevant maximum marks.	60% students scoring \geq 60% marks out of relevant maximum marks.
4	High	3	70% students scoring \geq 60% marks out of relevant maximum marks.	70% students scoring \geq 60% marks out of relevant maximum marks.

Course Outcomes (COs) Attainment

Sl No.	CO Code	Threshold based Attainment %	Attainment Level	Average based Attainment %
1	CO1	97.14 % drill down	3.00	81.47 %
2	CO2	97.14 % drill down	3.00	81.47 %
3	CO3	97.14 % drill down	3.00	81.47 %



[Handwritten signature]



PSG SONS & CHARITY TRUST
PSG College of Pharmacy, Coimbatore.
Department of Pharmacy

4	CO4	97.14 % drill down	3.00	81.47 %
5	CO5	97.14 % drill down	3.00	81.47 %

Overall Course Outcomes COs Attainments are Finalized

CO Code	CO Statement	Threshold based Attainment %	Attainment Level	Average based Threshold %
CO1	Identify various tissues and explain its morphological structure and functions	97.14 %	3.00	81.47 %
CO2	Enumerate their own rbc, wbc count(s)	97.14 %	3.00	81.47 %
CO3	Determine their own blood group, bleeding & clotting time and hemoglobin determination	97.14 %	3.00	81.47 %
CO4	Identify the bones and types of joints	97.14 %	3.00	81.47 %
CO5	Determination of heart rate & pulse rate, blood pressure	97.14 %	3.00	81.47 %

Course - Course Outcomes (COs) to Program Outcomes (POs) Attainment Matrix

CO	PO1	PO2	PO3	PO4	PO5	PO6	PO7	PO8	PO9	PO10
CO1	3 (97.14%)	-	-	-	-	-	-	-	-	-
CO2	2 (97.14%)	-	-	-	-	-	-	-	-	-
CO3	2 (97.14%)	-	-	-	-	-	-	-	-	-
CO4	3 (97.14%)	-	-	-	-	-	-	-	-	-
CO5	2 (97.14%)	-	-	-	-	-	-	-	-	-

Course - Course Outcomes (COs) to Program Outcomes (POs) Attainment Matrix

Sl No.	Program Outcomes	Attainment based on Threshold method %	Attainment Level	Attainment based on Weighted Average Method %	Attainment Level
1	PO1	97.14 %	3.00	77.91 %	2.41

Course - Course Outcomes (COs) to Program Outcomes (POs) Attainment Matrix



PSG SONS & CHARITY TRUST
PSG College of Pharmacy, Coimbatore.
Department of Pharmacy

Sl No.	Map Level	Value	Map Level Weightage
1	High (3)	3	100.00%
2	Medium (2)	2	67.00%
3	Low (1)	1	33.00%

Note: The above bar graph depicts the overall class performance with respect to the Threshold % for individual Program Outcomes ((POs)). The Attainment % for respective columns is calculated using the below formula.

For Attainment based on Threshold method % = X / Y

Where,

X = Sum of all the Course Outcomes(COs)

Threshold based Attainment % mapped to the respective Program Outcome((PO))

Y = Count of Course Outcomes(COs) mapped to respective PO

For Attainment based on Weighted Average Method % = X / Y

Where,

X = Sum of all the Course Outcomes(COs)

Attainment % * Map Level Weighted

Attainment % mapped to the respective Program Outcome(PO)

Y = Count of Course Outcomes(COs) mapped to respective PO



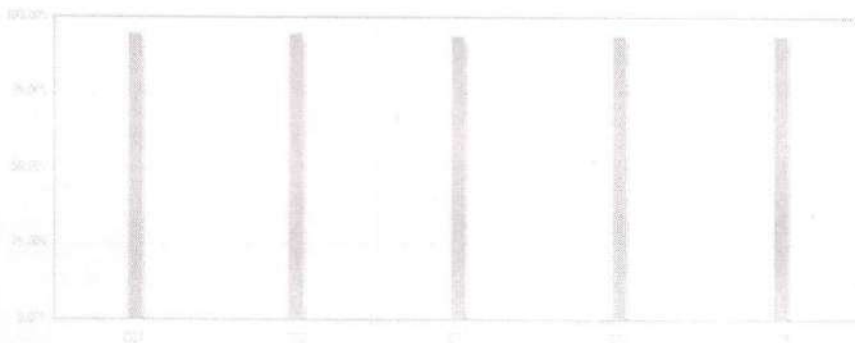


PSG SONS & CHARITY TRUST
PSG College of Pharmacy, Coimbatore.
Department of Pharmacy

Curriculum: BPharm in Pharm 2022-2026

Term: 1 - Semester

Course: Human Anatomy and Physiology I-BP101T

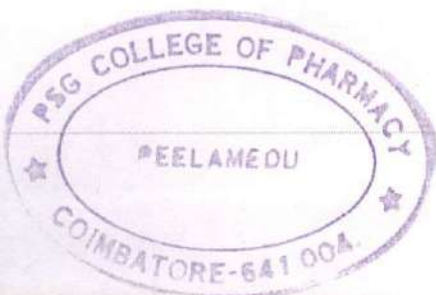


Direct Attainment / Targets Levels

Sl No.	Attainment Level Name	Attainment Level Value	CIA Target %	TEE Target %
1	Zero	0	0% students scoring \geq 60% marks out of relevant maximum marks.	0% students scoring \geq 60% marks out of relevant maximum marks.
2	Low	1	50% students scoring \geq 60% marks out of relevant maximum marks.	50% students scoring \geq 60% marks out of relevant maximum marks.
3	Medium	2	60% students scoring \geq 60% marks out of relevant maximum marks.	60% students scoring \geq 60% marks out of relevant maximum marks.
4	High	3	70% students scoring \geq 60% marks out of relevant maximum marks.	70% students scoring \geq 60% marks out of relevant maximum marks.

Course Outcomes (COs) Attainment

Sl No.	CO Code	Threshold based Attainment %	Attainment Level	Average based Attainment %
1	CO1	94.78 % drill down	3.00	68.16 %
2	CO2	94.78 % drill down	3.00	68.05 %
3	CO3	93.95 % drill down	3.00	68.05 %



[Handwritten Signature]



PSG SONS & CHARITY TRUST
PSG College of Pharmacy, Coimbatore.
Department of Pharmacy

4	CO4	94.05 % drill down	3.00	67.46 %
5	CO5	94.05 % drill down	3.00	67.46 %

Overall Course Outcomes COs Attainments are Finalized

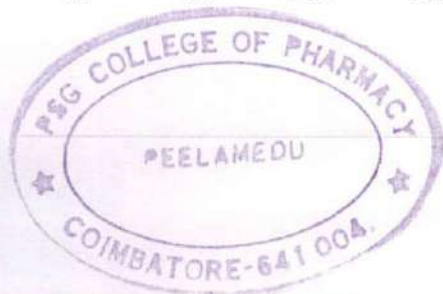


PSG SONS & CHARITY TRUST
PSG College of Pharmacy, Coimbatore.
Department of Pharmacy

CO Code	CO Statement	Threshold based Attainment %	Attainment Level	Average based Threshold %
CO1	The students are expected to apply the concepts and knowledge of the general anatomical terminologies, cell structure and functions of the organelles in the clinical scenarios	94.78 %	3.00	68.16 %
CO2	Should gain enhanced knowledge on anatomy and physiology of skeletal system and joints and its articulation in human body and to understand the structure and function of integumentary system.	94.78 %	3.00	68.05 %
CO3	Ability to differentiate among the blood components, its formation and functions and the disorders and to incorporate the significance of blood grouping while transfusion.	93.95 %	3.00	68.05 %
CO4	Should identify the anatomical and functional divisions of the peripheral nervous system and demonstrate how this system is interrelated to apply a holistic approach to human health	94.05 %	3.00	67.46 %
CO5	Identify and appreciate the anatomy and role of cardiovascular system and should explain the association among the organs involved in the cardiac conduction system and to understand the technological innovation in analyzing the function of heart.	94.05 %	3.00	67.46 %

Course - Course Outcomes (COs) to Program Outcomes (POs) Attainment Matrix

CO PO1 PO2 PO3 PO4 PO5 PO6 PO7 PO8 PO9 PO10



[Handwritten Signature]



PSG SONS & CHARITY TRUST
PSG College of Pharmacy, Coimbatore.
Department of Pharmacy

CO1	2 (94.78%)	3 (94.78%)	1 (94.78%)	3 (94.78%)	3 (94.78%)	2 (94.78%)	-	-	-	-
CO2	2 (94.78%)	3 (94.78%)	1 (94.78%)	3 (94.78%)	3 (94.78%)	2 (94.78%)	-	-	-	-
CO3	2 (93.95%)	3 (93.95%)	1 (93.95%)	3 (93.95%)	3 (93.95%)	2 (93.95%)	-	-	-	-
CO4	2 (94.05%)	2 (94.05%)	1 (94.05%)	3 (94.05%)	3 (94.05%)	2 (94.05%)	-	-	-	-
CO5	2 (94.05%)	3 (94.05%)	1 (94.05%)	3 (94.05%)	3 (94.05%)	2 (94.05%)	-	-	-	-

1 Course - Course Outcomes (COs) to Program Outcomes (POs) Attainment Matrix

SI No.	Program Outcomes	Attainment based on Threshold method %	Attainment Level	Attainment based on Weighted Average Method %	Attainment Level
1	PO1	94.32 %	3.00	63.20 %	2.01
2	PO2	94.32 %	3.00	88.11 %	2.80
3	PO3	94.32 %	3.00	31.13 %	0.99
4	PO4	94.32 %	3.00	94.32 %	3.00
5	PO5	94.32 %	3.00	94.32 %	3.00
6	PO6	94.32 %	3.00	63.20 %	2.01

2 Course - Course Outcomes (COs) to Program Outcomes (POs) Attainment Matrix

SI No.	Map Level	Value	Map Level Weightage
1	High (3)	3	100.00%
2	Medium (2)	2	67.00%
3	Low (1)	1	33.00%

Note: The above bar graph depicts the overall class performance with respect to the Threshold % for individual Program Outcomes ((POs)). The Attainment % for respective columns is calculated using the below formula.

For Attainment based on Threshold method % = X / Y

Where,

X = Sum of all the Course Outcomes(COs) Threshold based Attainment % mapped to the respective Program Outcome((PO))

Y = Count of Course Outcomes(COs) mapped to respective PO

For Attainment based on Weighted Average Method % = X / Y

Where,

X = Sum of all the Course Outcomes(COs) Attainment % * Map Level Weighted Attainment % mapped to the respective Program Outcome(PO)

Y = Count of Course Outcomes(COs) mapped to respective PO

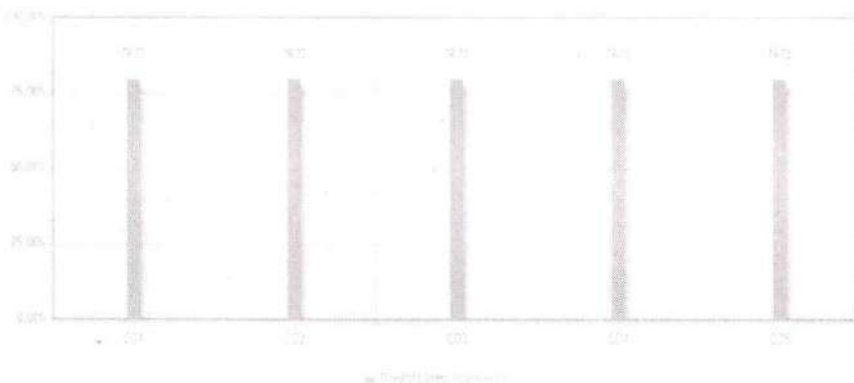


PSG SONS & CHARITY TRUST
PSG College of Pharmacy, Coimbatore.
Department of Pharmacy

Curriculum: B in Pharm 2020-2024

Term: 5 - Semester

Course: Medicinal chemistry II-BP501T



Direct Attainment / Targets Levels

Sl No.	Attainment Level Name	Attainment Level Value	CIA Target %	TEE Target %
1	Zero	0	0% students scoring \geq 60% marks out of relevant maximum marks.	0% students scoring \geq 60% marks out of relevant maximum marks.
2	Low	1	50% students scoring \geq 60% marks out of relevant maximum marks.	50% students scoring \geq 60% marks out of relevant maximum marks.
3	Medium	2	60% students scoring \geq 60% marks out of relevant maximum marks.	60% students scoring \geq 60% marks out of relevant maximum marks.
4	High	3	70% students scoring \geq 60% marks out of relevant maximum marks.	70% students scoring \geq 60% marks out of relevant maximum marks.

Course Outcomes (COs) Attainment

Sl No.	CO Code	Threshold based Attainment %	Attainment Level	Average based Attainment %
1	CO1	79.73 % drill down	3.00	71.72 %
2	CO2	79.73 % drill down	3.00	71.72 %
3	CO3	79.73 % drill down	3.00	71.72 %



[Handwritten Signature]



PSG SONS & CHARITY TRUST
PSG College of Pharmacy, Coimbatore.
Department of Pharmacy

4	CO4	79.73 % drill down	3.00	71.72 %
5	CO5	79.73 % drill down	3.00	71.72 %

Overall Course Outcomes COs Attainments are Finalized

CO Code	CO Statement	Threshold based Attainment %	Attainment Level	Average based Threshold %
CO1	Know the development, chemistry, sar, mechanism of action and synthesis of various drugs used to treat allergic responses, ulcer and cancer.	79.73 %	3.00	71.72 %
CO2	Learn the classification, chemistry, sar, mechanism of action and synthesis of cardio vascular agents.	79.73 %	3.00	71.72 %
CO3	Know the chemistry, mechanism of action and synthesis and uses of drugs used to treat cardiac related disorders.	79.73 %	3.00	71.72 %
CO4	Understand the chemistry, sar, mechanism of action and uses of drugs acting on endocrine system.	79.73 %	3.00	71.72 %
CO5	Development, chemistry, sar, mechanism of action, synthesis and various formulations of hypoglycemic agents and local anesthetics	79.73 %	3.00	71.72 %

Program Outcomes POs Attainment by the Course

Sl No.	Program Outcomes	Attainment based on Threshold method %	Attainment Level	Attainment based on Weighted Average Method %	Attainment Level
1	PO1	79.73 %	3.00	58.68 %	2.21
2	PO7	79.73 %	3.00	26.31 %	0.99
3	PO9	79.73 %	3.00	79.73 %	3.00



PSG SONS & CHARITY TRUST
PSG College of Pharmacy, Coimbatore.
Department of Pharmacy

② Program Outcomes POs Attainment by the Course

Sl No.	Map Level	Value	Map Level Weightage
1	High (3)	3	100.00%
2	Medium (2)	2	67.00%
3	Low (1)	1	33.00%

Note: The above bar graph depicts the overall class performance with respect to the Threshold % for individual Program Outcomes ((POs)). The Attainment % for respective columns is calculated using the below formula.

For Attainment based on Threshold method % = X / Y

Where,

X = Sum of all the Course Outcomes(COs) Threshold based Attainment % mapped to the respective Program Outcome((PO))

Y = Count of Course Outcomes(COs) mapped to respective PO

For Attainment based on Weighted Average Method % = X / Y

Where,

X = Sum of all the Course Outcomes(COs) Attainment % * Map Level Weighted Attainment % mapped to the respective Program Outcome(PO)

Y = Count of Course Outcomes(COs) mapped to respective PO





PSG SONS & CHARITY TRUST
PSG College of Pharmacy, Coimbatore.
Department of Pharmacy

Curriculum: B in Pharm 2020-2024

Term: 6 - Semester

Course: Medicinal Chemistry III P-BP607P

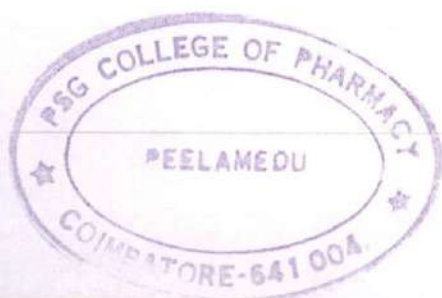


Direct Attainment / Targets Levels

Sl No.	Attainment Level Name	Attainment Level Value	CIA Target %	TEE Target %
1	Zero	0	0% students scoring \geq 60% marks out of relevant maximum marks.	0% students scoring \geq 60% marks out of relevant maximum marks.
2	Low	1	50% students scoring \geq 60% marks out of relevant maximum marks.	50% students scoring \geq 60% marks out of relevant maximum marks.
3	Medium	2	60% students scoring \geq 60% marks out of relevant maximum marks.	60% students scoring \geq 60% marks out of relevant maximum marks.
4	High	3	70% students scoring \geq 60% marks out of relevant maximum marks.	70% students scoring \geq 60% marks out of relevant maximum marks.

Course Outcomes (COs) Attainment

Sl No.	CO Code	Threshold based Attainment %	Attainment Level	Average based Attainment %
1	CO1	98.99 % drill down	3.00	84.63 %
2	CO2	98.99 % drill down	3.00	84.63 %
3	CO3	98.99 % drill down	3.00	84.63 %



[Handwritten Signature]



PSG SONS & CHARITY TRUST
PSG College of Pharmacy, Coimbatore.
Department of Pharmacy

4	CO4	98.99 % drill down	3.00	84.63 %
5	CO5	98.99 % drill down	3.00	84.63 %

Overall Course Outcomes COs Attainments are Finalized

CO Code	CO Statement	Threshold based Attainment %	Attainment Level	Average based Threshold %
CO1	Understand and carryout the preparation of important medicinal compounds or intermediates by conventional and microwave irradiated methods and their characterization.	98.99 %	3.00	84.63 %
CO2	Able to find out the percentage purity of given sample of medicinal compounds along with standardization	98.99 %	3.00	84.63 %
CO3	Able to sketch chemical structures using softwares/online tools.	98.99 %	3.00	84.63 %
CO4	Able to determine physicochemical properties such as logp,mr,molecular weight, hydrogen bond donors and acceptors and acceptors for certain class of drugs using drug design software	98.99 %	3.00	84.63 %
CO5	Able to analyse the drug likeliness screening (lipinskies rule of 5)	98.99 %	3.00	84.63 %

Course - Course Outcomes (COs) to Program Outcomes (POs) Attainment Matrix

CO	PO1	PO2	PO3	PO4	PO5	PO6	PO7	PO8	PO9	PO10
CO1	3 (98.99%)	-	-	-	-	-	1 (98.99%)	-	3 (98.99%)	-
CO2	1 (98.99%)	-	-	-	-	-	-	2 (98.99%)	-	-
CO3	1 (98.99%)	-	-	-	-	-	-	-	1 (98.99%)	-
CO4	2 (98.99%)	-	-	-	-	-	-	1 (98.99%)	3 (98.99%)	-
CO5	-	-	-	-	-	-	-	-	3 (98.99%)	-



PSG SONS & CHARITY TRUST
PSG College of Pharmacy, Coimbatore.
Department of Pharmacy

② Course - Course Outcomes (COs) to Program Outcomes (POs) Attainment Matrix

Sl No.	Program Outcomes	Attainment based on Threshold method %	Attainment Level	Attainment based on Weighted Average Method %	Attainment Level
1	PO1	98.99 %	3.00	57.66 %	1.75
2	PO7	98.99 %	3.00	32.67 %	0.99
3	PO8	98.99 %	3.00	49.49 %	1.50
4	PO9	98.99 %	3.00	82.41 %	2.50

③ Course - Course Outcomes (COs) to Program Outcomes (POs) Attainment Matrix

Sl No.	Map Level	Value	Map Level Weightage
1	High (3)	3	100.00%
2	Medium (2)	2	67.00%
3	Low (1)	1	33.00%

Note: The above bar graph depicts the overall class performance with respect to the Threshold % for individual Program Outcomes ((POs)). The Attainment % for respective columns is calculated using the below formula.

For Attainment based on Threshold method % = X / Y

Where,

X = Sum of all the Course Outcomes(COs) Threshold based Attainment % mapped to the respective Program Outcome((PO))

Y = Count of Course Outcomes(COs) mapped to respective PO

For Attainment based on Weighted Average Method % = X / Y

Where,

X = Sum of all the Course Outcomes(COs) Attainment % * Map Level Weighted Attainment % mapped to the respective Program Outcome(PO)

Y = Count of Course Outcomes(COs) mapped to respective PO



[Handwritten signature]

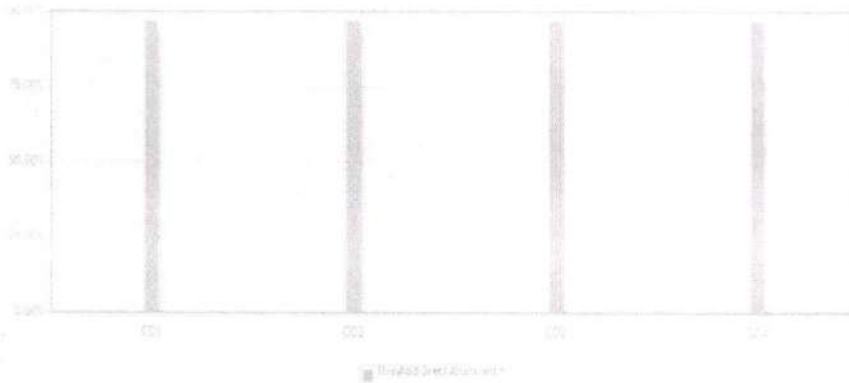


PSG SONS & CHARITY TRUST
PSG College of Pharmacy, Coimbatore.
Department of Pharmacy

Curriculum: Bachelor in Pharm 2021-2025

Term: 4 - Semester

Course: Pharmacognosy and Phytochemistry I Practical-BP409P



Direct Attainment / Targets Levels

Sl No.	Attainment Level Name	Attainment Level Value	CIA Target %	TEE Target %
1	Zero	0	0% students scoring \geq 50% marks out of relevant maximum marks.	0% students scoring \geq 40% marks out of relevant maximum marks.
2	Low	1	50% students scoring \geq 50% marks out of relevant maximum marks.	50% students scoring \geq 40% marks out of relevant maximum marks.
3	Medium	2	60% students scoring \geq 50% marks out of relevant maximum marks.	60% students scoring \geq 40% marks out of relevant maximum marks.
4	High	3	70% students scoring \geq 50% marks out of relevant maximum marks.	70% students scoring \geq 40% marks out of relevant maximum marks.

Course Outcomes (COs) Attainment

Sl No.	CO Code	Threshold based Attainment %	Attainment Level	Average based Attainment %
1	CO1	96.91 % drill down	3.00	82.56 %
2	CO2	96.91 % drill down	3.00	82.56 %
3	CO3	96.91 % drill down	3.00	82.56 %



Handwritten signature



PSG SONS & CHARITY TRUST
PSG College of Pharmacy, Coimbatore.
Department of Pharmacy

4	CO4	96.91 % drill down	3.00	82.56 %
---	-----	-----------------------	------	---------

Overall Course Outcomes COs Attainments are Finalized

CO Code	CO Statement	Threshold based Attainment %	Attainment Level	Average based Threshold %
CO1	Students are able to apply the basic knowledge and to identify the phytochemical compounds by its physicochemical analysis as per the sop standard procedure	96.91 %	3.00	82.56 %
CO2	Students are understand and apply the current innovation and advancement in the field of traditional system of medicine to evaluate /analysis anatomy or cellular characters/safety profile of the herbal drugs as per the regulatory guideline	96.91 %	3.00	82.56 %
CO3	Purity /safety of the crude drugs determined by various analytical procedures of different ash value techniques as per pharmacopoeial standards	96.91 %	3.00	82.56 %
CO4	Qualitative, quantitative analytical methods to apply the determination of phytochemical present in the traditional drugs	96.91 %	3.00	82.56 %

Course - Course Outcomes (COs) to Program Outcomes (POs) Attainment Matrix

CO	PO1	PO2	PO3	PO4	PO5	PO6	PO7	PO8	PO9	PO10
CO1	2 (96.91%)	-	-	-	-	-	2 (96.91%)	1 (96.91%)	1 (96.91%)	-
CO2	2 (96.91%)	-	-	-	-	-	-	2 (96.91%)	2 (96.91%)	-
CO3	-	-	-	-	-	-	3 (96.91%)	2 (96.91%)	-	-
CO4	1 (96.91%)	-	-	-	-	-	-	-	3 (96.91%)	-

Course - Course Outcomes (COs) to Program Outcomes (POs) Attainment Matrix



PSG SONS & CHARITY TRUST
PSG College of Pharmacy, Coimbatore.
Department of Pharmacy

Sl No.	Program Outcomes	Attainment based on Threshold method %	Attainment Level	Attainment based on Weighted Average Method %	Attainment Level
1	PO1	96.91 %	3.00	53.95 %	1.67
2	PO7	96.91 %	3.00	80.92 %	2.50
3	PO8	96.91 %	3.00	53.95 %	1.67
4	PO9	96.91 %	3.00	64.61 %	2.00

Course - Course Outcomes (COs) to Program Outcomes (POs) Attainment Matrix

Sl No.	Map Level	Value	Map Level Weightage
1	High (3)	3	100.00%
2	Medium (2)	2	67.00%
3	Low (1)	1	33.00%

Note: The above bar graph depicts the overall class performance with respect to the Threshold % for individual Program Outcomes ((POs)). The Attainment % for respective columns is calculated using the below formula.

For Attainment based on Threshold method % = X / Y

Where,
X = Sum of all the Course Outcomes(COs) Threshold based Attainment % mapped to the respective Program Outcome((PO))
Y = Count of Course Outcomes(COs) mapped to respective PO

For Attainment based on Weighted Average Method % = X / Y

Where,
X = Sum of all the Course Outcomes(COs) Attainment % * Map Level Weighted Attainment % mapped to the respective Program Outcome(PO)
Y = Count of Course Outcomes(COs) mapped to respective PO



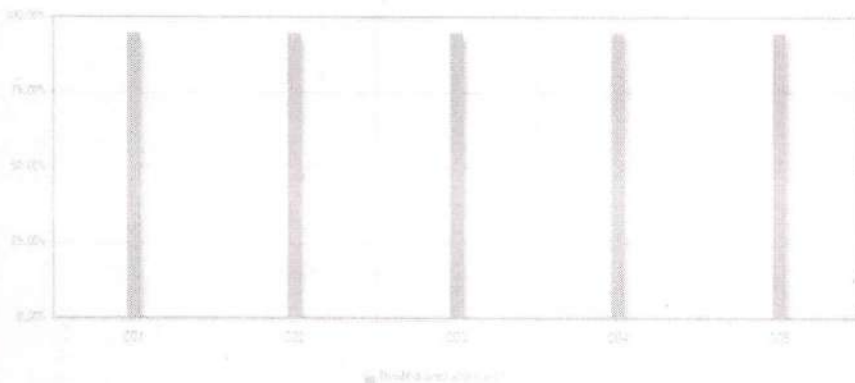


PSG SONS & CHARITY TRUST
PSG College of Pharmacy, Coimbatore.
Department of Pharmacy

Curriculum: Bachelor in Pharm 2021-2025

Term: 4 - Semester

Course: Pharmacognosy and Phytochemistry I-BP405T



Direct Attainment / Targets Levels

Sl No.	Attainment Level Name	Attainment Level Value	CIA Target %	TEE Target %
1	Zero	0	0% students scoring \geq 50% marks out of relevant maximum marks.	0% students scoring \geq 40% marks out of relevant maximum marks.
2	Low	1	50% students scoring \geq 50% marks out of relevant maximum marks.	50% students scoring \geq 40% marks out of relevant maximum marks.
3	Medium	2	60% students scoring \geq 50% marks out of relevant maximum marks.	60% students scoring \geq 40% marks out of relevant maximum marks.
4	High	3	70% students scoring \geq 50% marks out of relevant maximum marks.	70% students scoring \geq 40% marks out of relevant maximum marks.

Course Outcomes (COs) Attainment

Sl No.	CO Code	Threshold based Attainment %	Attainment Level	Average based Attainment %
1	CO1	94.85 % drill down	3.00	65.68 %
2	CO2	94.85 % drill down	3.00	65.68 %
3	CO3	94.85 % drill down	3.00	65.68 %





PSG SONS & CHARITY TRUST
PSG College of Pharmacy, Coimbatore.
Department of Pharmacy

4	CO4	94.85 % drill down	3.00	65.68 %
5	CO5	94.85 % drill down	3.00	65.68 %

Overall Course Outcomes COs Attainments are Finalized



PSG SONS & CHARITY TRUST
PSG College of Pharmacy, Coimbatore.
Department of Pharmacy

CO Code	CO Statement	Threshold based Attainment %	Attainment Level	Average based Threshold %
CO1	Basic knowledge gained from pharmacognosy & phytochemistry, various natural sources of crude drugs and its systematic scientific classification. the quality controls /standardization of herbal drug evaluation & the adulteration of crude drugs as per the regulatory guideline. (po1)	94.85 %	3.00	65.68 %
CO2	Ability to understand and apply systematic technological innovations in the field of cultivation, collection process and its factors affecting the production of crude drugs , preservation of medicinal plants with its advancement in the development through polyploidy, hybridization and mutation. (po6), (po7)	94.85 %	3.00	65.68 %
CO3	Apply the current innovation and advancement in the field of biotechnology to develop the pharmaceutical products through plant tissue culture techniques and to usage of edible vaccines (traditional approach) for diagnosis, prevention and treatment of various ailments. (po6), (po7), (po8), (po9)	94.85 %	3.00	65.68 %
CO4	The role of pharmacognosy in allopathy and traditional system of medicine. the properties and confirmatory tests (analytical skills) for drug development from secondary metabolites (po9)	94.85 %	3.00	65.68 %



Handwritten signature



PSG SONS & CHARITY TRUST
PSG College of Pharmacy, Coimbatore.
Department of Pharmacy

CO5	Basic knowledge to study with respect to chemistry, sources, preparation of herbal drugs, plant fibers, natural allergens and its utilization of primary metabolites. preservation, storage, sops and the pharmacopoeial standards are maintained as per regulatory guidelines (po7), (po1), (po8)	94.85 %	3.00	65.68 %
-----	--	---------	------	---------

Course - Course Outcomes (COs) to Program Outcomes (POs) Attainment Matrix

CO	PO1	PO2	PO3	PO4	PO5	PO6	PO7	PO8	PO9	PO10
CO1	2 (94.85%)	-	-	-	-	-	-	-	-	-
CO2	-	-	-	-	-	3 (94.85%)	2 (94.85%)	-	-	-
CO3	-	-	-	-	-	3 (94.85%)	2 (94.85%)	2 (94.85%)	1 (94.85%)	-
CO4	-	-	-	-	-	-	-	-	2 (94.85%)	-
CO5	1 (94.85%)	-	-	-	-	-	3 (94.85%)	2 (94.85%)	-	-

Course - Course Outcomes (COs) to Program Outcomes (POs) Attainment Matrix

Sl No.	Program Outcomes	Attainment based on Threshold method %	Attainment Level	Attainment based on Weighted Average Method %	Attainment Level
1	PO1	94.85 %	3.00	47.42 %	1.50
2	PO6	94.85 %	3.00	94.85 %	3.00
3	PO7	94.85 %	3.00	73.98 %	2.34
4	PO8	94.85 %	3.00	63.55 %	2.01
5	PO9	94.85 %	3.00	47.42 %	1.50

Course - Course Outcomes (COs) to Program Outcomes (POs) Attainment Matrix

Sl No.	Map Level	Value	Map Level Weightage
1	High (3)	3	100.00%
2	Medium (2)	2	67.00%
3	Low (1)	1	33.00%

Note: The above bar graph depicts the overall class performance with respect to the Threshold % for individual Program Outcomes ((POs)). The Attainment % for respective columns is calculated using the below formula.



PSG SONS & CHARITY TRUST
PSG College of Pharmacy, Coimbatore.
Department of Pharmacy

For Attainment based on Threshold method % = X / Y

Where,

X = Sum of all the Course Outcomes(COs)

Threshold based Attainment % mapped to the respective Program Outcome((PO))

Y = Count of Course Outcomes(COs) mapped to respective PO

For Attainment based on Weighted Average Method % = X / Y

Where,

X = Sum of all the Course Outcomes(COs)

Attainment % * Map Level Weighted

Attainment % mapped to the respective Program Outcome(PO)

Y = Count of Course Outcomes(COs) mapped to respective PO



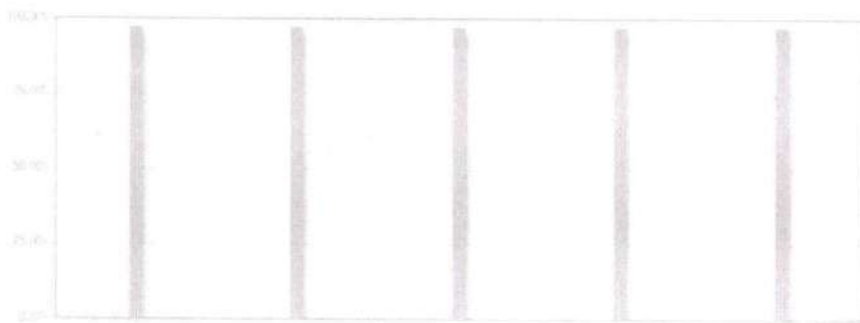


PSG SONS & CHARITY TRUST
PSG College of Pharmacy, Coimbatore.
Department of Pharmacy

Curriculum: BPharm in Pharm 2022-2026

Term: 3 - Semester

Course: Pharmaceutical engineering-Practical-BP308P



Direct Attainment / Targets Levels

Sl No.	Attainment Level Name	Attainment Level Value	CIA Target %	TEE Target %
1	Zero	0	0% students scoring \geq 50% marks out of relevant maximum marks.	0% students scoring \geq 40% marks out of relevant maximum marks.
2	Low	1	50% students scoring \geq 50% marks out of relevant maximum marks.	50% students scoring \geq 40% marks out of relevant maximum marks.
3	Medium	2	60% students scoring \geq 50% marks out of relevant maximum marks.	60% students scoring \geq 40% marks out of relevant maximum marks.
4	High	3	70% students scoring \geq 50% marks out of relevant maximum marks.	70% students scoring \geq 40% marks out of relevant maximum marks.

Course Outcomes (COs) Attainment

Sl No.	CO Code	Threshold based Attainment %	Attainment Level	Average based Attainment %
1	CO1	97.28 % drill down	3.00	75.74 %
2	CO2	97.28 % drill down	3.00	75.74 %
3	CO3	97.28 % drill down	3.00	75.74 %



Handwritten signature



PSG SONS & CHARITY TRUST
PSG College of Pharmacy, Coimbatore.
Department of Pharmacy

4	CO4	97.28 % drill down	3.00	75.74 %
5	CO5	97.28 % drill down	3.00	75.74 %

Overall Course Outcomes COs Attainments are Finalized

CO Code	CO Statement	Threshold based Attainment %	Attainment Level	Average based Threshold %
CO1	Ability to determine particle size of poly dispersed powder by using sieve analysis. ability to apply the concept of size reduction using various size reduction techniques	97.28 %	3.00	75.74 %
CO2	Ability to determine end point of drying, loss of drying and moisture content of a wet sample by constructing drying rate curve.	97.28 %	3.00	75.74 %
CO3	Understand the significance of various factors affecting filtration, evaporation and crystallization	97.28 %	3.00	75.74 %
CO4	Understand the construction, working and application of various equipments by practical demonstration.	97.28 %	3.00	75.74 %
CO5	Perform various experiments related to heat transfer.	97.28 %	3.00	75.74 %

Course - Course Outcomes (COs) to Program Outcomes (POs) Attainment Matrix

CO	PO1	PO2	PO3	PO4	PO5	PO6	PO7	PO8	PO9	PO10
CO1	-	-	3 (97.28%)	-	-	2 (97.28%)	-	-	-	-
CO2	-	-	3 (97.28%)	-	-	2 (97.28%)	-	-	-	-
CO3	-	-	3 (97.28%)	-	-	2 (97.28%)	-	-	-	-
CO4	-	-	3 (97.28%)	-	-	2 (97.28%)	-	-	-	-
CO5	-	-	3 (97.28%)	-	-	2 (97.28%)	-	-	-	-

Course - Course Outcomes (COs) to Program Outcomes (POs) Attainment Matrix



PSG SONS & CHARITY TRUST
PSG College of Pharmacy, Coimbatore.
Department of Pharmacy

Sl No.	Program Outcomes	Attainment based on Threshold method %	Attainment Level	Attainment based on Weighted Average Method %	Attainment Level
1	PO3	97.28 %	3.00	97.28 %	3.00
2	PO6	97.28 %	3.00	65.18 %	2.01

Course - Course Outcomes (COs) to Program Outcomes (POs) Attainment Matrix

Sl No.	Map Level	Value	Map Level Weightage
1	High (3)	3	100.00%
2	Medium (2)	2	67.00%
3	Low (1)	1	33.00%

Note: The above bar graph depicts the overall class performance with respect to the Threshold % for individual Program Outcomes ((POs)). The Attainment % for respective columns is calculated using the below formula.

For Attainment based on Threshold method % = X / Y

Where,

X = Sum of all the Course Outcomes(COs) Threshold based Attainment % mapped to the respective Program Outcome((PO))

Y = Count of Course Outcomes(COs) mapped to respective PO

For Attainment based on Weighted Average Method % = X / Y

Where,

X = Sum of all the Course Outcomes(COs) Attainment % * Map Level Weighted Attainment % mapped to the respective Program Outcome(PO)

Y = Count of Course Outcomes(COs) mapped to respective PO

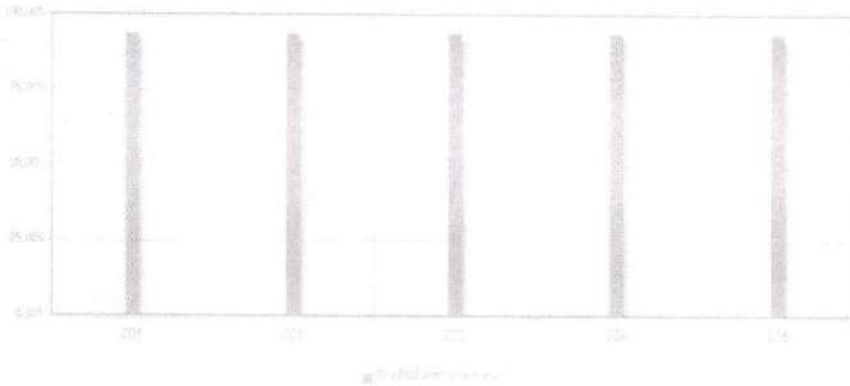




Curriculum: BPharm in Pharm 2022-2026

Term: 3 - Semester

Course: Pharmaceutical Engineering-Theory-BP304T



Direct Attainment / Targets Levels

Sl No.	Attainment Level Name	Attainment Level Value	CIA Target %	TEE Target %
1	Zero	0	0% students scoring \geq 50% marks out of relevant maximum marks.	0% students scoring \geq 40% marks out of relevant maximum marks.
2	Low	1	50% students scoring \geq 50% marks out of relevant maximum marks.	50% students scoring \geq 40% marks out of relevant maximum marks.
3	Medium	2	60% students scoring \geq 50% marks out of relevant maximum marks.	60% students scoring \geq 40% marks out of relevant maximum marks.
4	High	3	70% students scoring \geq 50% marks out of relevant maximum marks.	70% students scoring \geq 40% marks out of relevant maximum marks.

Course Outcomes (COs) Attainment

Sl No.	CO Code	Threshold based Attainment %	Attainment Level	Average based Attainment %
1	CO1	93.75 % drill down	3.00	65.03 %
2	CO2	93.75 % drill down	3.00	65.03 %
3	CO3	93.75 % drill down	3.00	65.03 %



[Signature]



PSG SONS & CHARITY TRUST
PSG College of Pharmacy, Coimbatore.
Department of Pharmacy

4	CO4	93.75 % drill down	3.00	65.03 %
5	CO5	93.75 % drill down	3.00	65.03 %

Overall Course Outcomes COs Attainments are Finalized



PSG SONS & CHARITY TRUST
PSG College of Pharmacy, Coimbatore.
Department of Pharmacy

CO Code	CO Statement	Threshold based Attainment %	Attainment Level	Average based Threshold %
CO1	Ability to understand the relationship between pressure and fluid flow. basic knowledge of relationship between particle size and solubility for developing nanoparticles. understand various mechanism of size separation based on size, shape and density.	93.75 %	3.00	65.03 %
CO2	Basic understanding of mechanism of heat transfer. ability to understand the operation and principles of various evaporators and distillation. understand the separation of compounds based on difference in boiling point	93.75 %	3.00	65.03 %
CO3	Understand the significance of drying in pharmaceutical product. ability to understand the operation and principles of drying units. application of mixing in solid & liquid dosage forms such as tablet, capsules, and syrups	93.75 %	3.00	65.03 %
CO4	Ability to understand the operation and principles of filtration and centrifugation units. understand its application in preparing sterile dosage forms.	93.75 %	3.00	65.03 %
CO5	Ability to participate in preparing pharmaceutical plant layout and to control corrosion by proper selection of materials.	93.75 %	3.00	65.03 %

Course - Course Outcomes (COs) to Program Outcomes (POs) Attainment Matrix

CO	PO1	PO2	PO3	PO4	PO5	PO6	PO7	PO8	PO9	PO10
CO1	-	3 (93.75%)	-	-	-	-	-	-	3 (93.75%)	-



[Handwritten Signature]



PSG SONS & CHARITY TRUST
PSG College of Pharmacy, Coimbatore.
Department of Pharmacy

CO2	-	3 (93.75%)	-	-	-	-	-	-	3 (93.75%)	-
CO3	-	3 (93.75%)	-	-	-	-	-	-	3 (93.75%)	-
CO4	-	3 (93.75%)	-	-	-	-	-	-	3 (93.75%)	-
CO5	-	3 (93.75%)	-	-	-	-	-	-	3 (93.75%)	-

Course - Course Outcomes (COs) to Program Outcomes (POs) Attainment Matrix

Sl No.	Program Outcomes	Attainment based on Threshold method %	Attainment Level	Attainment based on Weighted Average Method %	Attainment Level
1	PO2	93.75 %	3.00	93.75 %	3.00
2	PO9	93.75 %	3.00	93.75 %	3.00

Course - Course Outcomes (COs) to Program Outcomes (POs) Attainment Matrix

Sl No.	Map Level	Value	Map Level Weightage
1	High (3)	3	100.00%
2	Medium (2)	2	67.00%
3	Low (1)	1	33.00%

Note: The above bar graph depicts the overall class performance with respect to the Threshold % for individual Program Outcomes ((POs)). The Attainment % for respective columns is calculated using the below formula.

For Attainment based on Threshold method % = X / Y

Where,

X = Sum of all the Course Outcomes(COs) Threshold based Attainment % mapped to the respective Program Outcome((PO))

Y = Count of Course Outcomes(COs) mapped to respective PO

For Attainment based on Weighted Average Method % = X / Y

Where,

X = Sum of all the Course Outcomes(COs) Attainment % * Map Level Weighted Attainment % mapped to the respective Program Outcome(PO)

Y = Count of Course Outcomes(COs) mapped to respective PO

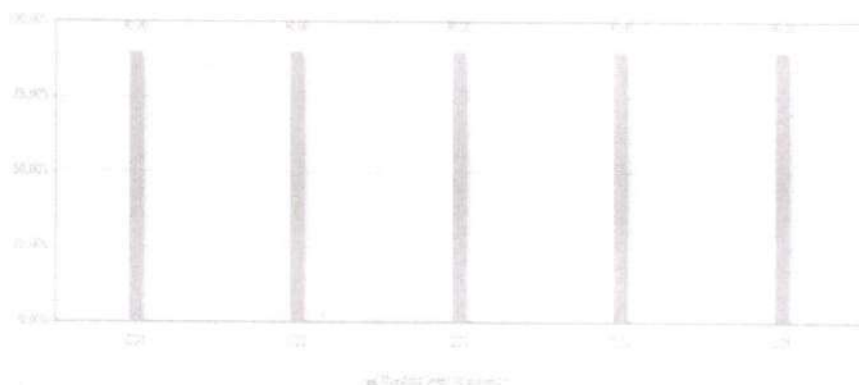


PSG SONS & CHARITY TRUST
PSG College of Pharmacy, Coimbatore.
Department of Pharmacy

Curriculum: PharmD in PharmD 2020-2026

Term: 1 year

Course: Pharmaceutics -12



Direct Attainment / Targets Levels

SI No.	Attainment Level Name	Attainment Level Value	CIA Target %	TEE Target %
1	Zero	0	0% students scoring \geq 60% marks out of relevant maximum marks.	0% students scoring \geq 60% marks out of relevant maximum marks.
2	Low	1	50% students scoring \geq 60% marks out of relevant maximum marks.	50% students scoring \geq 60% marks out of relevant maximum marks.
3	Medium	2	60% students scoring \geq 60% marks out of relevant maximum marks.	60% students scoring \geq 60% marks out of relevant maximum marks.
4	High	3	70% students scoring \geq 60% marks out of relevant maximum marks.	70% students scoring \geq 60% marks out of relevant maximum marks.

Course Outcomes (COs) Attainment

SI No.	CO Code	Threshold based Attainment %	Attainment Level	Average based Attainment %
1	CO1	90.00 % drill down	3.00	76.15 %
2	CO2	90.00 % drill down	3.00	76.15 %
3	CO3	90.00 % drill down	3.00	76.15 %



[Handwritten Signature]

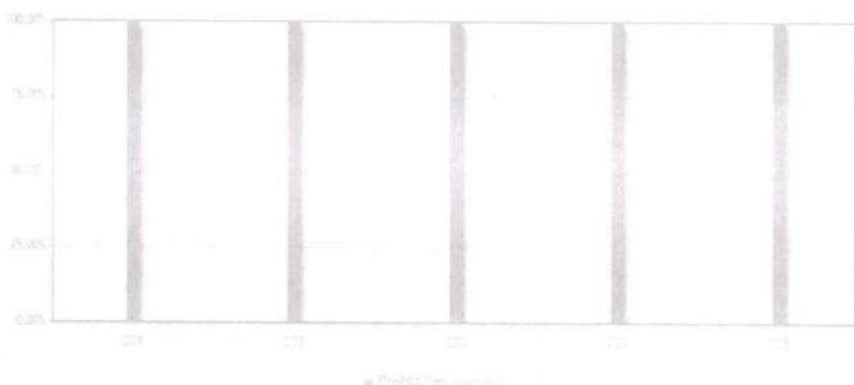


PSG SONS & CHARITY TRUST
PSG College of Pharmacy, Coimbatore.
Department of Pharmacy

Curriculum: BPharm in Pharm 2022-2026

Term: 2 - Semester

Course: Pharmaceutical Organic Chemistry -1 PRACTICAL-BP208P



Direct Attainment / Targets Levels

Sl No.	Attainment Level Name	Attainment Level Value	CIA Target %	TEE Target %
1	Zero	0	0% students scoring \geq 50% marks out of relevant maximum marks.	0% students scoring \geq 40% marks out of relevant maximum marks.
2	Low	1	50% students scoring \geq 50% marks out of relevant maximum marks.	50% students scoring \geq 40% marks out of relevant maximum marks.
3	Medium	2	60% students scoring \geq 50% marks out of relevant maximum marks.	60% students scoring \geq 40% marks out of relevant maximum marks.
4	High	3	70% students scoring \geq 50% marks out of relevant maximum marks.	70% students scoring \geq 40% marks out of relevant maximum marks.

Course Outcomes (COs) Attainment

Sl No.	CO Code	Threshold based Attainment %	Attainment Level	Average based Attainment %
1	CO1	100.00 % drill down	3.00	91.75 %
2	CO2	100.00 % drill down	3.00	91.75 %
3	CO3	100.00 % drill down	3.00	91.75 %



[Handwritten Signature]



PSG SONS & CHARITY TRUST
PSG College of Pharmacy, Coimbatore.
Department of Pharmacy

4	CO4	100.00 % drill down	3.00	91.75 %
5	CO5	100.00 % drill down	3.00	91.75 %

Overall Course Outcomes COs Attainments are Finalized

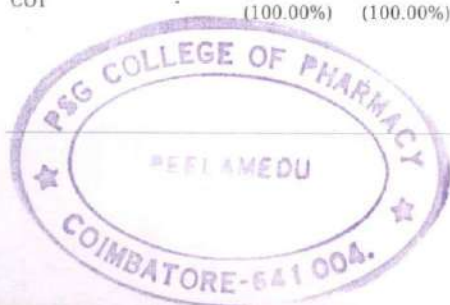


PSG SONS & CHARITY TRUST
PSG College of Pharmacy, Coimbatore.
Department of Pharmacy

CO Code	CO Statement	Threshold based Attainment %	Attainment Level	Average based Threshold %
CO1	Graduates will acquire an adequate knowledge in nomenclature, isomerism and physical properties of certain important classes of organic compounds which imparts a foundation for the future study of various medicinal compounds.	100.00 %	3.00	91.75 %
CO2	Mechanisms of synthetic tools in generating newer products and intermediates can be correlated with novel drug design and development in future.	100.00 %	3.00	91.75 %
CO3	The mode of quality control procedures and applications of numerous medicinal agents help to adapt the students to focus on purity parameters pertaining to the drugs of choice.	100.00 %	3.00	91.75 %
CO4	The account for reactivity, orientation and stability of the compounds attribute to the influence towards predicting the prognosis of certain reactions.	100.00 %	3.00	91.75 %
CO5	The practical knowledge from the laboratory synthesis of medicinal organic molecules and their qualitative organic analysis helps to interpret and arrive to valid conclusions about the organic samples.	100.00 %	3.00	91.75 %

Course - Course Outcomes (COs) to Program Outcomes (POs) Attainment Matrix

CO	PO1	PO2	PO3	PO4	PO5	PO6	PO7	PO8	PO9	PO10
CO1	2 (100.00%)	2 (100.00%)	-	-	3 (100.00%)	-	-	-	-	-



Handwritten signature



PSG SONS & CHARITY TRUST
PSG College of Pharmacy, Coimbatore.
Department of Pharmacy

CO2	1 (100.00%)	2 (100.00%)	2 (100.00%)	-	-	2 (100.00%)	-	-	-	-
CO3	1 (100.00%)	1 (100.00%)	-	-	-	2 (100.00%)	-	-	-	-
CO4	2 (100.00%)	1 (100.00%)	-	-	-	-	-	-	-	-
CO5	3 (100.00%)	-	2 (100.00%)	-	-	-	-	-	-	-

Course - Course Outcomes (COs) to Program Outcomes (POs) Attainment Matrix

Sl No.	Program Outcomes	Attainment based on Threshold method %	Attainment Level	Attainment based on Weighted Average Method %	Attainment Level
1	PO1	100.00 %	3.00	58.25 %	1.75
2	PO2	100.00 %	3.00	50.00 %	1.50
3	PO3	100.00 %	3.00	67.00 %	2.01
4	PO6	100.00 %	3.00	78.00 %	2.34

Course - Course Outcomes (COs) to Program Outcomes (POs) Attainment Matrix

Sl No.	Map Level	Value	Map Level Weightage
1	High (3)	3	100.00%
2	Medium (2)	2	67.00%
3	Low (1)	1	33.00%

Note: The above bar graph depicts the overall class performance with respect to the Threshold % for individual Program Outcomes ((POs)). The Attainment % for respective columns is calculated using the below formula.

For Attainment based on Threshold method % = X / Y

Where,

X = Sum of all the Course Outcomes(COs) Threshold based Attainment % mapped to the respective Program Outcome((PO))

Y = Count of Course Outcomes(COs) mapped to respective PO

For Attainment based on Weighted Average Method % = X / Y

Where,

X = Sum of all the Course Outcomes(COs) Attainment % * Map Level Weighted Attainment % mapped to the respective Program Outcome(PO)

Y = Count of Course Outcomes(COs) mapped to respective PO



PSG SONS & CHARITY TRUST
PSG College of Pharmacy, Coimbatore.
Department of Pharmacy

Curriculum: BPharm in Pharm 2022-2026

Term: 2 - Semester

Course: Pharmaceutical Organic Chemistry I - THEORY-BP202T



Direct Attainment / Targets Levels

Sl No.	Attainment Level Name	Attainment Level Value	CIA Target %	TEE Target %
1	Zero	0	0% students scoring \geq 60% marks out of relevant maximum marks.	0% students scoring \geq 60% marks out of relevant maximum marks.
2	Low	1	50% students scoring \geq 60% marks out of relevant maximum marks.	50% students scoring \geq 60% marks out of relevant maximum marks.
3	Medium	2	60% students scoring \geq 60% marks out of relevant maximum marks.	60% students scoring \geq 60% marks out of relevant maximum marks.
4	High	3	70% students scoring \geq 60% marks out of relevant maximum marks.	70% students scoring \geq 60% marks out of relevant maximum marks.

Course Outcomes (COs) Attainment

Sl No.	CO Code	Threshold based Attainment %	Attainment Level	Average based Attainment %
1	CO1	78.57 % drill down	3.00	73.08 %
2	CO2	78.81 % drill down	3.00	73.48 %
3	CO3	78.90 % drill down	3.00	73.66 %



[Handwritten Signature]



PSG SONS & CHARITY TRUST
PSG College of Pharmacy, Coimbatore.
Department of Pharmacy

4	CO4	79.48 % drill down	3.00	74.65 %
5	CO5	79.46 % drill down	3.00	74.52 %

Overall Course Outcomes COs Attainments are Finalized

CO Code	CO Statement	Threshold based Attainment %	Attainment Level	Average based Threshold %
CO1	Graduates will acquire an adequate knowledge in nomenclature, isomerism of certain important classes of organic compounds which imparts a foundation for the future study of various medicinal compounds.	78.57 %	3.00	73.08 %
CO2	Mechanisms of elimination & addition reaction, stability studies will help to correlate with novel drug design and development in future.	78.81 %	3.00	73.48 %
CO3	Account for reactivity/stability of compounds & identification of compounds influence towards predicting the prognosis of certain reactions.	78.90 %	3.00	73.66 %
CO4	Naming reaction account to the influence towards predicting the prognosis of certain reactions. & to confirm the identification of organic compound	79.48 %	3.00	74.65 %
CO5	The practical knowledge from the laboratory synthesis of medicinal organic molecules and their qualitative organic analysis helps to interpret and arrive to valid conclusions about the organic samples.	79.46 %	3.00	74.52 %



PSG SONS & CHARITY TRUST
PSG College of Pharmacy, Coimbatore.
Department of Pharmacy

2 Course - Course Outcomes (COs) to Program Outcomes (POs) Attainment Matrix

CO	PO1	PO2	PO3	PO4	PO5	PO6	PO7	PO8	PO9	PO10
CO1	3 (78.57%)	-	-	-	-	-	-	2 (78.57%)	1 (78.57%)	-
CO2	1 (78.81%)	2 (78.81%)	-	-	-	-	-	-	3 (78.81%)	-
CO3	1 (78.90%)	2 (78.90%)	-	-	-	-	1 (78.90%)	-	2 (78.90%)	-
CO4	-	1 (79.48%)	-	-	-	-	1 (79.48%)	-	1 (79.48%)	-
CO5	-	1 (79.46%)	-	-	-	-	-	-	1 (79.46%)	-

2 Course - Course Outcomes (COs) to Program Outcomes (POs) Attainment Matrix

Sl No.	Program Outcomes	Attainment based on Threshold method %	Attainment Level	Attainment based on Weighted Average Method %	Attainment Level
1	PO1	78.76 %	3.00	43.54 %	1.66
2	PO2	79.16 %	3.00	39.53 %	1.50
3	PO7	79.19 %	3.00	26.13 %	0.99
4	PO8	78.57 %	3.00	52.64 %	2.01
5	PO9	79.04 %	3.00	42.01 %	1.60

2 Course - Course Outcomes (COs) to Program Outcomes (POs) Attainment Matrix

Sl No.	Map Level	Value	Map Level Weightage
1	High (3)	3	100.00%
2	Medium (2)	2	67.00%
3	Low (1)	1	33.00%

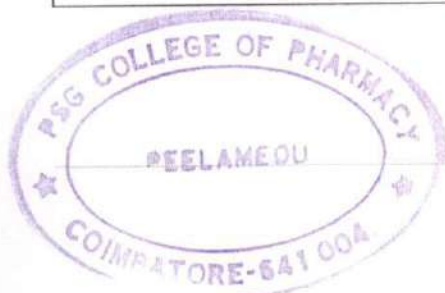
Note: The above bar graph depicts the overall class performance with respect to the Threshold % for individual Program Outcomes ((POs)). The Attainment % for respective columns is calculated using the below formula.

For Attainment based on Threshold method % = X / Y

Where,
X = Sum of all the Course Outcomes(COs) Threshold based Attainment % mapped to the respective Program Outcome((PO))
Y = Count of Course Outcomes(COs) mapped to respective PO

For Attainment based on Weighted Average Method % = X / Y

Where,
X = Sum of all the Course Outcomes(COs) Attainment % * Map Level Weighted Attainment % mapped to the respective Program Outcome(PO)
Y = Count of Course Outcomes(COs) mapped to respective PO





PSG SONS & CHARITY TRUST
PSG College of Pharmacy, Coimbatore.
Department of Pharmacy

Curriculum: Bachelor in Pharm 2021-2025

Term: 3 - Semester

Course: Physical Pharmaceutics I-BP302T



Direct Attainment / Targets Levels

Sl No.	Attainment Level Name	Attainment Level Value	CIA Target %	TEE Target %
1	Zero	0	0% students scoring \geq 60% marks out of relevant maximum marks.	0% students scoring \geq 60% marks out of relevant maximum marks.
2	Low	1	50% students scoring \geq 60% marks out of relevant maximum marks.	50% students scoring \geq 60% marks out of relevant maximum marks.
3	Medium	2	60% students scoring \geq 60% marks out of relevant maximum marks.	60% students scoring \geq 60% marks out of relevant maximum marks.
4	High	3	70% students scoring \geq 60% marks out of relevant maximum marks.	70% students scoring \geq 60% marks out of relevant maximum marks.

Course Outcomes (COs) Attainment

Sl No.	CO Code	Threshold based Attainment %	Attainment Level	Average based Attainment %
1	CO1	65.17 % drill down	1.38	65.66 %
2	CO2	65.17 % drill down	1.38	65.66 %
3	CO3	65.17 % drill down	1.38	65.66 %



[Handwritten Signature]



PSG SONS & CHARITY TRUST
PSG College of Pharmacy, Coimbatore.
Department of Pharmacy

4	CO4	65.17 % drill down	1.38	65.66 %
5	CO5	65.17 % drill down	1.38	65.66 %

Overall Course Outcomes COs Attainments are Finalized

CO Code	CO Statement	Threshold based Attainment %	Attainment Level	Average based Threshold %
CO1	Acquire detailed knowledge on different types of solubilities and their application in the development of delivery system	65.17 %	1.38	65.66 %
CO2	Describe the pharmaceutical relevance of different states of matter to drug delivery systems	65.17 %	1.38	65.66 %
CO3	Demonstrate the underlying principles of adsorption, solubilisation & differentiate types of interfaces with relevant examples in pharmaceutical sciences	65.17 %	1.38	65.66 %
CO4	Describe, analyze, distinguish the types of complexes & correlate to drug action and protein binding	65.17 %	1.38	65.66 %
CO5	Appreciate the methods to determine ph & able to prepare pharmaceutical buffers and isotonic solutions.	65.17 %	1.38	65.66 %

Program Outcomes POs Attainment by the Course

SI No.	Program Outcomes	Attainment based on Threshold method %	Attainment Level	Attainment based on Weighted Average Method %	Attainment Level
1	PO1	65.17 %	1.38	43.66 %	0.92
2	PO2	65.17 %	1.38	43.66 %	0.92
3	PO7	65.17 %	1.38	65.17 %	1.38
4	PO9	65.17 %	1.38	43.45 %	0.92



PSG SONS & CHARITY TRUST
PSG College of Pharmacy, Coimbatore.
Department of Pharmacy

② Program Outcomes POs Attainment by the Course

Sl No.	Map Level	Value	Map Level Weightage
1	High (3)	3	100.00%
2	Medium (2)	2	67.00%
3	Low (1)	1	33.00%

Note: The above bar graph depicts the overall class performance with respect to the Threshold % for individual Program Outcomes ((POs)). The Attainment % for respective columns is calculated using the below formula.

For Attainment based on Threshold method % = X / Y

Where,

X = Sum of all the Course Outcomes(COs)

Threshold based Attainment % mapped to the respective Program Outcome((PO))

Y = Count of Course Outcomes(COs) mapped to respective PO

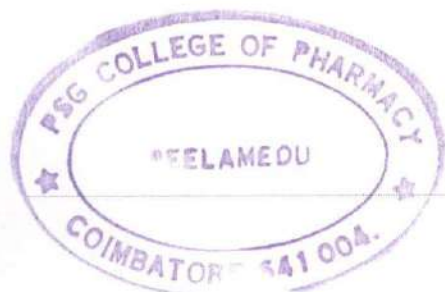
For Attainment based on Weighted Average Method % = X / Y

Where,

X = Sum of all the Course Outcomes(COs)

Attainment % * Map Level Weighted Attainment % mapped to the respective Program Outcome(PO)

Y = Count of Course Outcomes(COs) mapped to respective PO



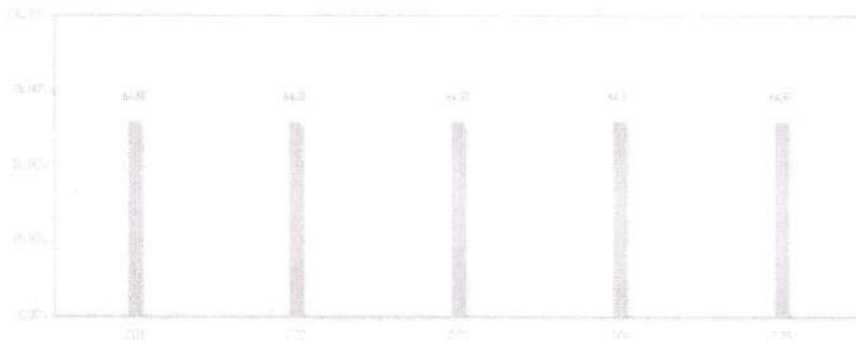


PSG SONS & CHARITY TRUST
PSG College of Pharmacy, Coimbatore.
Department of Pharmacy

Curriculum: B in Pharm 2020-2024

Term: 6 - Semester

Course: Medicinal Chemistry III-BP601T



Direct Attainment / Targets Levels

Sl No.	Attainment Level Name	Attainment Level Value	CIA Target %	TEE Target %
1	Zero	0	0% students scoring \geq 60% marks out of relevant maximum marks.	0% students scoring \geq 60% marks out of relevant maximum marks.
2	Low	1	50% students scoring \geq 60% marks out of relevant maximum marks.	50% students scoring \geq 60% marks out of relevant maximum marks.
3	Medium	2	60% students scoring \geq 60% marks out of relevant maximum marks.	60% students scoring \geq 60% marks out of relevant maximum marks.
4	High	3	70% students scoring \geq 60% marks out of relevant maximum marks.	70% students scoring \geq 60% marks out of relevant maximum marks.

Course Outcomes (COs) Attainment

Sl No.	CO Code	Threshold based Attainment %	Attainment Level	Average based Attainment %
1	CO1	64.88 % drill down	1.50	67.52 %
2	CO2	64.88 % drill down	1.50	67.52 %
3	CO3	64.93 % drill down	1.50	67.82 %





PSG SONS & CHARITY TRUST
PSG College of Pharmacy, Coimbatore.
Department of Pharmacy

4	CO4	64.93 % drill down	1.50	67.82 %
5	CO5	64.93 % drill down	1.50	67.82 %

Overall Course Outcomes COs Attainments are Finalized

CO Code	CO Statement	Threshold based Attainment %	Attainment Level	Average based Threshold %
CO1	Know the development, different classes, chemistry, SAR, mechanism of action and synthesis of anti-biotics.	64.88 %	1.50	67.52 %
CO2	Learn the development, different classes, chemistry, SAR, mechanism of action and synthesis of some antibiotics and anti-metabolites. Understand the chemistry behind prodrugs and its applications.	64.88 %	1.50	67.52 %
CO3	Understand the chemistry, mechanism of action and uses of anti-infective agents.	64.93 %	1.50	67.82 %
CO4	Know the chemistry, SAR, mechanism of action and uses of sulphur drugs and anthelmintics.	64.93 %	1.50	67.82 %
CO5	Understand the basic concept of drug design and able to apply different drug design approaches and techniques towards the drug development.	64.93 %	1.50	67.82 %

Course - Course Outcomes (COs) to Program Outcomes (POs) Attainment Matrix

CO	PO1	PO2	PO3	PO4	PO5	PO6	PO7	PO8	PO9	PO10
CO1	3 (64.88%)	2 (64.88%)	-	-	1 (64.88%)	1 (64.88%)	-	3 (64.88%)	3 (64.88%)	-
CO2	2 (64.88%)	2 (64.88%)	-	-	1 (64.88%)	-	-	3 (64.88%)	3 (64.88%)	-
CO3	2 (64.93%)	2 (64.93%)	-	-	1 (64.93%)	-	-	3 (64.93%)	3 (64.93%)	-
CO4	2 (64.93%)	2 (64.93%)	-	-	1 (64.93%)	-	-	3 (64.93%)	3 (64.93%)	-
CO5	1 (64.93%)	-	-	-	-	1 (64.93%)	-	1 (64.93%)	3 (64.93%)	-

Course - Course Outcomes (COs) to Program Outcomes (POs) Attainment



PSG SONS & CHARITY TRUST
PSG College of Pharmacy, Coimbatore.
Department of Pharmacy

Matrix

Sl No.	Program Outcomes	Attainment based on Threshold method %	Attainment Level	Attainment based on Weighted Average Method %	Attainment Level
1	PO1	64.91 %	1.50	43.36 %	1.00
2	PO2	64.90 %	1.50	43.49 %	1.00
3	PO5	64.90 %	1.50	21.42 %	0.50
4	PO6	64.90 %	1.50	21.42 %	0.50
5	PO8	64.91 %	1.50	56.21 %	1.30
6	PO9	64.91 %	1.50	64.91 %	1.50

Course - Course Outcomes (COs) to Program Outcomes (POs) Attainment Matrix

Sl No.	Map Level	Value	Map Level Weightage
1	High (3)	3	100.00%
2	Medium (2)	2	67.00%
3	Low (1)	1	33.00%

Note: The above bar graph depicts the overall class performance with respect to the Threshold % for individual Program Outcomes ((POs)). The Attainment % for respective columns is calculated using the below formula.

For Attainment based on Threshold method % = X / Y

Where,

X = Sum of all the Course Outcomes(COs) Threshold based Attainment % mapped to the respective Program Outcome((PO))

Y = Count of Course Outcomes(COs) mapped to respective PO

For Attainment based on Weighted Average Method % = X / Y

Where,

X = Sum of all the Course Outcomes(COs) Attainment % * Map Level Weighted Attainment % mapped to the respective Program Outcome(PO)

Y = Count of Course Outcomes(COs) mapped to respective PO



[Handwritten Signature]