



**PSG College of Pharmacy
Coimbatore - 641004**

2.7.1 Student Satisfaction Survey -2019

Students' feedback has a significant effect on the assessment process of the institution's activities and its performance in relation with establishing its vision and goals. It also contributes in planning out new and effective strategies that will enable the institution to provide a better learning experience for the students staying aligned with their goals.

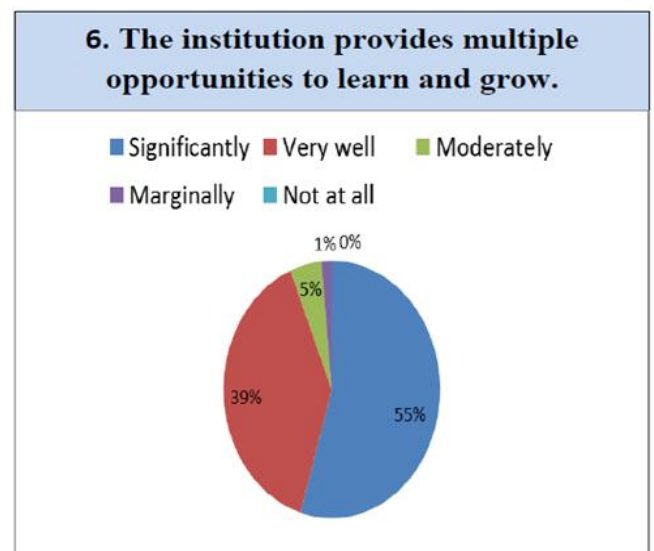
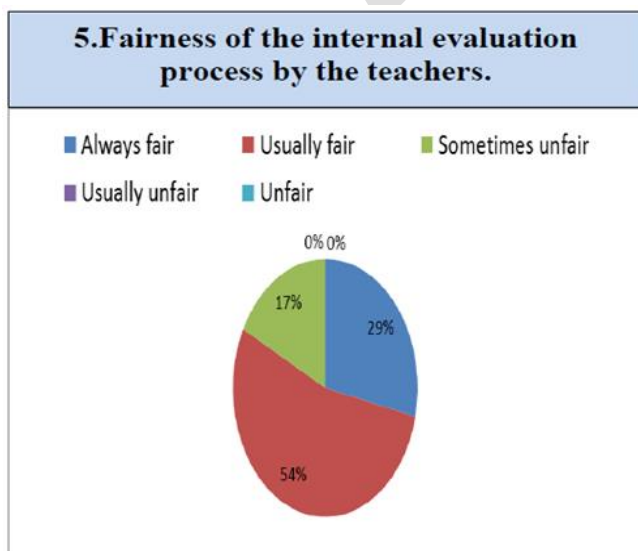
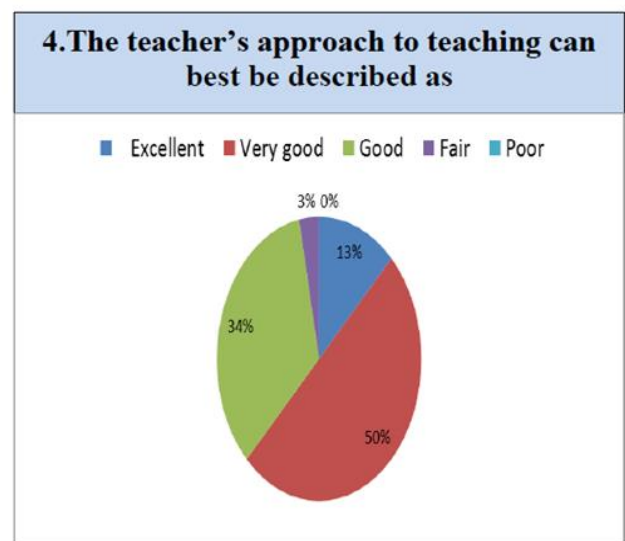
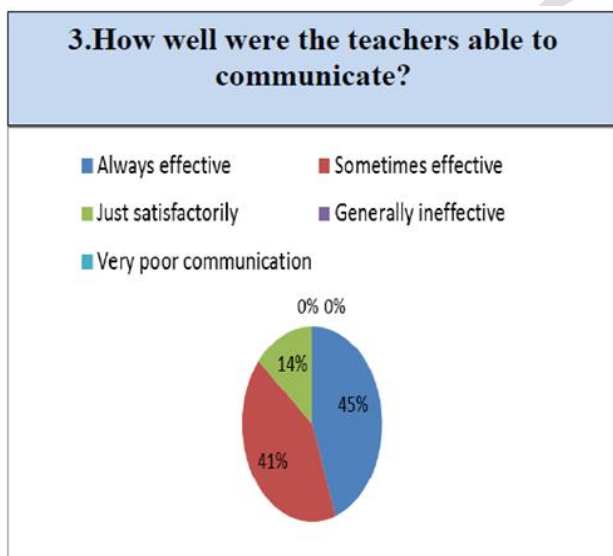
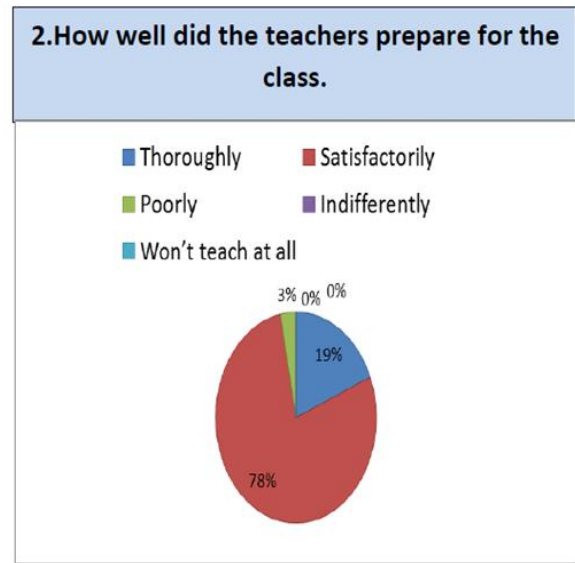
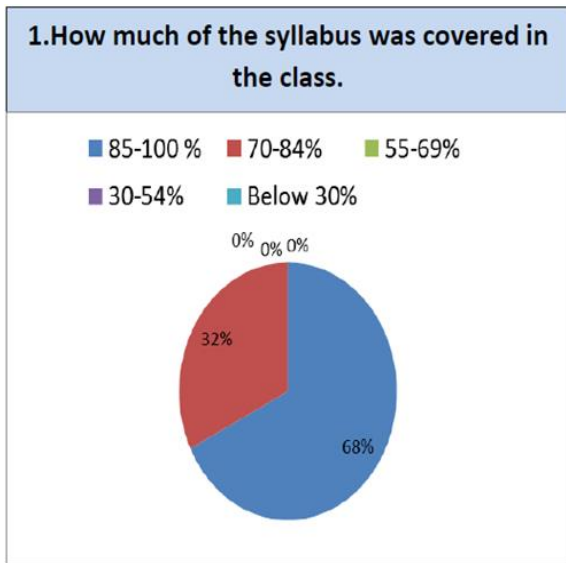
Feedback collection and analysis

The feedback from the students is collected manually through a printed questionnaire by the institution on a required pattern. The feedback is collected from the students of B.Pharm, M.Pharm and Pharm.D disciplines on the graduation day ceremony. This questionnaire enables the students to mark their opinions based on their experience in various categories like

- Teaching, Learning and Evaluation Process
- Mentorship
- Research
- Infrastructure
- Capacity Building Programs
- CSR Activities
- Moral and ethical Values

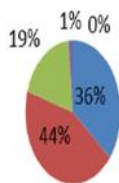
Feedback Report

TEACHING, LEARNING AND EVALUATION PROCESS



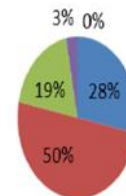
7. Teachers inform you about your expected competencies, course outcomes and program outcomes

- Every time
- Usually
- Occasionally/Sometimes
- Rarely
- Never



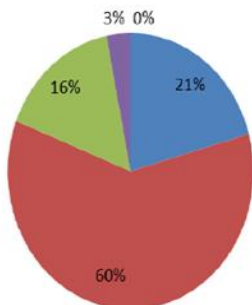
8. The teachers illustrate the concepts through examples and applications.

- Every time
- Usually
- Occasionally/Sometimes
- Rarely
- Never



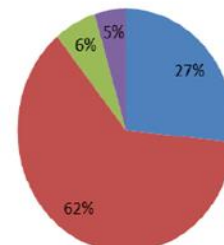
9. The teachers help in identifying your strengths and weakness to facilitate proper learning

- Fully
- Reasonably
- Partially
- Slightly
- Unable to



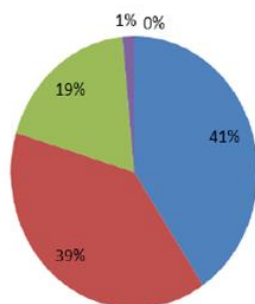
10. The institute/ teachers use student centric methods, such as experiential learning, participative learning and problem solving methodologies for enhancing learning

- To a great extent
- Moderate
- Somewhat
- Very little
- Not at all



11. What percentage of teachers use ICT tools such as LCD projector, Multimedia, etc. while teaching?

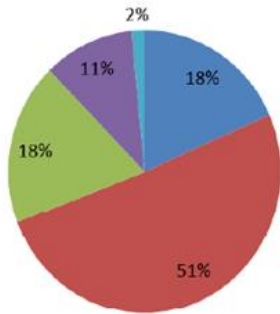
- Above 90%
- 70 – 89%
- 50 – 69%
- 30 – 49%
- Below 29%



MENTORSHIP

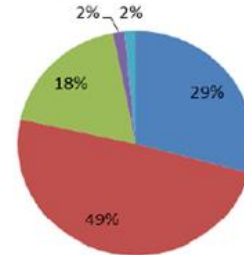
1. Your mentor does a necessary follow-up with an assigned task to you.

■ everytime ■ usually ■ occasionally ■ rarely ■ never



2. The teaching and mentoring process in your institution facilitates you in cognitive, social and emotional growth.

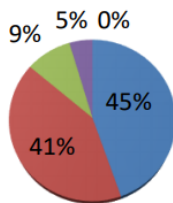
■ significantly ■ very well ■ moderately
■ marginally ■ never



RESEARCH

1. The institution motivates and promotes research activities by the students

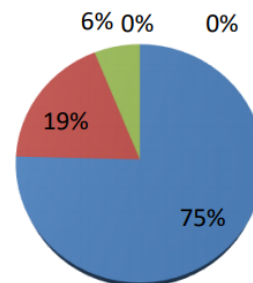
■ To a great extent ■ Moderate
■ Somewhat ■ Very little
■ Not at all



INFRASTRUCTURE

1. Infrastructure provided for curricular and extracurricular activities

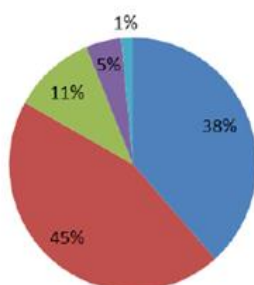
■ Excellent ■ very good ■ good ■ fair ■ poor



CAPACITY BUILDING PROGRAMS

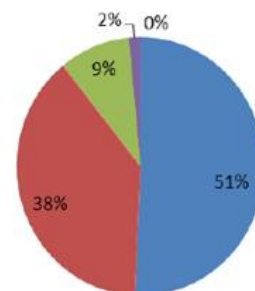
1. The institution organizes capacity building programs which will enable students to develop key skills required for entrepreneurship

■ To a great extent ■ Moderate ■ Somewhat
■ Very little ■ Not at all



2. The institution provides a platform to develop and demonstrate leadership qualities

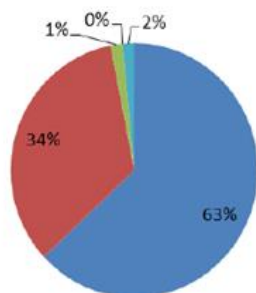
■ Strongly agree ■ Agree ■ Neutral
■ Disagree ■ Strongly disagree



CSR ACTIVITIES

1. The institution provides opportunity for the students to take part in community service activities and thereby inculcates social

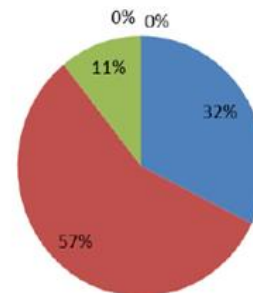
■ Strongly agree ■ Agree ■ Neutral
■ Disagree ■ Strongly disagree



ETHICAL & MORAL VALUES

2. The institution instils the importance of ethical values and behaviour in students

■ Strongly agree ■ Agree ■ Neutral
■ Disagree ■ Strongly disagree



Feedback Analysis

Teaching, Learning and Evaluation Process

The students are highly satisfied with the syllabus covered and the teacher's communication in the class. They are also satisfied with the teachers approach and their explanation on the expected competencies and course outcome. The students agree to a great extent that the teachers facilitate experimental, participative learning and problem solving skills in the students.

Mentorship

The students are well pleased with the mentorship program offered by the institution and they also agree that it helps them on their cognitive, social and emotional growth.

Research

The students agree to a great extent that the institution motivates and promotes research activities which serve as a tool helping them to gain a deep understanding of the scientific process.

Infrastructure

The infrastructure plays a vital role in creating a favourable environment for the academic and extracurricular activities. The students rate the infrastructure provided for both curricular and extracurricular activities by the institution to be excellent.

Capacity Building Programs

The students are satisfied with the capacity building programs organised by the college to help them develop the skills required for entrepreneurship and they are also highly satisfied with the opportunities provided by the college to exhibit and develop their leadership skills.

CSR Activities

The students strongly agree that the college provides them opportunities to take part in community service activities and thus help them in building social responsibility.

Moral & Ethical Values

The students agree that the college instils the importance of moral and ethical values in them. These virtues help in building up the character of the students.

Scope of Improvement and action taken

S.No	Scope of Improvement	Action Taken
1	The students expressed their need to include more audio visual teaching materials during the class. It is observed from the feedback that students expect more innovative interactive teaching techniques.	It was suggested to the teachers to include more audio visual material during their teaching. Initiation was taken to set up smart classrooms to enhance their learning experiences.
2	The students expect the college to bring in more career guidance program and improve in campus placement.	Interaction with industry has been initiated for the following year and more industrial experts will be invited
3	It is observed from students feedback that they seek assistance in developing more practical skills	Separate timings will be given in the time table to have more practical classes